

Resene

ARCHITECTURE & DESIGN FILM FESTIVAL 2025



THE CHODGE BY DCA ARCHITECTS OF TRANSFORMATION; PHOTOGRAPHY BY SIMON DEVITT



AUCKLAND
1-21 May



NELSON
8-21 May



WELLINGTON
15 May-2 June



CHRISTCHURCH
15 May-1 June



DUNEDIN
29 May-11 June



HAWKE'S BAY
29 May-11 June

[ARCHITECTUREANDDESIGNFILMFESTIVAL.CO.NZ](https://architectureanddesignfilmfestival.co.nz)

SPONSORS

Naming Rights

Premiere Gold

Resene

the paint the professionals use

ARCHIPRO

Gold

FISHER & PAYKEL

blum

COLORSTEEL

HOME

GO Media

Bronze

**AD
NZ**
+ Architectural
Designers
New Zealand

INZIDE
sustainable flooring solutions

BROUGHT TO YOU BY

RIALTO  **CINEMAS**

ARCHIPRO

Your Beautiful Home Begins With ArchiPro

We bring the design and building industry together, connecting
the right people, products, and solutions – **all in one place.**



archipro.co.nz

FISHER & PAYKEL

KITCHEN PERFECTION

Create a kitchen without compromise with luxury appliances tailored to your lifestyle. Explore the potential at our Experience Centre, or discover more at fisherpaykel.com

GLOBAL EXPERIENCE CENTRES

Auckland | 199 Great North Road, Grey Lynn

Toronto | New York | Costa Mesa | London | Sydney | Melbourne

A WORD FROM RIALTO CINEMAS



Rialto Cinemas is proud once again, to bring you the Resene Architecture & Design Film Festival.

As we usher in the 14th edition of the festival, we can't help but reflect on the festival's beginnings. Launched in 2012, the festival initially screened exclusively at Rialto Cinemas Newmarket in Auckland. Since then, the festival has expanded into a nationwide event, reaching 12 regions and 15 venues. It has become a key annual film festival in Aotearoa and is one of the largest architecture and design film festivals in the world!

We want to thank our dedicated curatorial partners, who have carefully sourced a rich catalogue of films to build this year's programme and brought the creative vision of the festival to life. We're grateful for their contributions to crafting a festival that continues to challenge, delight, and inspire audiences.

To open the festival, we have a locally made documentary that highlights the talent, vision, and unique architectural stories found right here in Aotearoa. Graeme Murray's *The Chodge*, opens the doors to Darryl Church's award-winning holiday home on the picturesque banks of Lake Whakamaru, renowned for its striking 'translucent skin' exterior. The film beautifully captures this architectural gem and showcases Church's innovative approach to design. We invite you to step into this truly unique local home—*The Chodge* is unmissable.

Among this year's standouts are *E.1027 — Eileen Gray and the House by the Sea*, which explores the designer's iconic modernist villa and her struggle for creative control; *The Sense of Tuning*, the latest from cult architecture documentarians Bêka & Lemoine (*Big Ears Listen With Feet*, RADFF 2023; *Tokyo Ride*, RADFF 2021) which offers a sensory-rich portrait of architect Bijoy Jain of Studio Mumbai; and *I am Martin Parr*, an enormously entertaining look at the acclaimed British photographer, renowned for his unfiltered and mischievous images of British life. Rounding out our selection is *Architecton*, a poetic study of stone and concrete materials from acclaimed filmmaker Viktor Kossakovsky (*Gunda*); and *Schindler Space Architect*, narrated by Academy Award-winner Meryl Streep, which vividly brings the pioneering work of R.M. Schindler to life.

As always, we'd like to thank our sponsors for making this festival possible. A special thanks to Resene, our long-standing Naming Rights Sponsor; our Premiere Gold Sponsor ArchiPro; our Gold Sponsors Fisher & Paykel, Colorsteel, Blum, Home Magazine and Go Media; and our Bronze Sponsors ADNZ (Architectural Designers New Zealand) and Inzide.

—Kathryn Bennett
Group Manager, Rialto Cinemas

RIALTO CINEMAS

A WORD FROM THE CURATORS



In one of our favourite films of the programme this year, *Mary Heilmann: Waves, Roads & Hallucinations*, the artist is quoted as saying, "Every time you get a clever idea, it is a consequence of being connected, to a language, to people, that magical and spiritual aspect is the product of a group effort." It's a sentiment we cannot get out of our heads as we ascend on our 14th year of the festival.

Each time, we are motivated to provide a space for Aotearoa's arts and architecture industries to come together and celebrate progressive ways of thinking and creating. It is within this exchange that better worlds are imagined and 'clever ideas' are put into practice. It is also a group effort. We would like to thank our partners at Rialto Cinemas and our sponsors for their unwavering support, allowing us to host a catalogue of films that inspire Aotearoa's most curious minds.

This year, it is also hugely encouraging to feel a wave of local filmmakers swarm onto the scene, with powerful perspectives and a warm Kiwi attitude. A mention must be made to the local talent behind *The Chodge* film, which takes us through the build of a unique family home on the banks of Lake Whakamaru. It's the result of intuition and engineering that serves a purpose, as well as winning Architectural Designers New Zealand's Supreme Award, impressing the judges for its translucent walls and ceilings.

So, good luck deciding between our exceptional female-led films with notable stand out being Eileen Gray's house E.1027 on the French Riviera. And enjoy rummaging through the archives of architecture visionaries, such as Studio Mumbai in *The Sense of Tuning* or Rudolph Schindler's bohemian dream home in *Schindler Space Architect*. Alternatively, move your ideas outside with our beloved Landscape Architecture category: Materials from the Earth.

Our annual programme is becoming its own space. Each cinema session is a home for research, entertainment, and inspiration. It is where builders, makers, and radical thinkers unite. We can't wait to see you there.

—Yasmine Ganley & Sara Black

A WORD FROM RESENE



It's amazing what a difference you can make when you dare to be different and do what others say cannot be done.

We are endlessly inspired by the pioneers all around us, who push ahead with new ideas, and despite the brick walls and obstacles that block the path, thanks to a good dose of persistence and grit they find a way to make things happen.

On the cusp of Resene's 80th birthday, we're always reminded of our own pioneering spirit with Ted Nightingale starting Resene in a concrete mixer in a Wellington garage, making a paint to solve his building problem. Despite being a builder rather than a paint maker, Ted persevered to first make a paint he could use on his own projects, then soon found he had a ready market of other builders clamouring to buy it. And thus, Resene was born.

Resene's story is reminiscent of so many others, where a seemingly small solution to a problem becomes a new way of doing things.

We often see this in the architecture and design space. Problems require creativity to solve them and in that creativity is genius. Not only is the problem solved, but the solution opens up new possibilities in the future. All those things we think can't be done, there's most likely someone out there working on the solution.

We see buildings and landscapes reinvented, we see projects that don't just look good but truly work to support those using the space, and we see projects that bring joy to the community, a much-needed beacon of hope and optimism in sometimes trying times. It's a reminder that creativity, passion, colour and enthusiasm have so much to offer us all.

Thanks to Rialto Cinemas, the Resene Architecture & Design Film Festival has also overcome its own challenges along the way to now be celebrating its 14th anniversary and its status as one of the largest architecture and design festivals in the world. And we've been privileged to be on the journey since the very first film was shown.

We are always delighted to be able to share this fantastic festival with you, in the hopes that it will inspire you as much as it always inspires us.

Enjoy!

—Nick Nightingale
Managing Director, Resene

Resene
the paint the professionals use

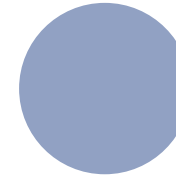
FESTIVAL CONTACTS

✉ Enquiries: contact@architectureanddesignfilmfestival.co.nz

f Facebook: [@architecturedesignfilmfestival](https://www.facebook.com/architecturedesignfilmfestival)

📷 Instagram: [#resenearchitecturedesignff](https://www.instagram.com/resenearchitecturedesignff) #radff

🌐 Website: architectureanddesignfilmfestival.co.nz

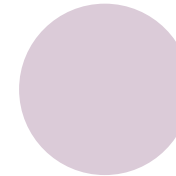


MASTERS OF ARCHITECTURE

Get inside the minds of the world's most experienced and experimental architects as they continuously confront the question: 'What do we need?'

SPONSORED BY

INZIDE
sustainable flooring solutions



FASCINATING FEMALES

Radically minded and unapologetic, these women and their life's work will leave your spirit humming.

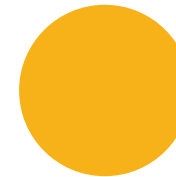
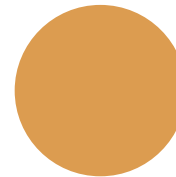


IMAGE AS LANGUAGE

Exploring the boundaries of our cultural obsessions, we ask: 'What does an image mean in today's world?'



MATERIALS FROM THE EARTH

By creating spaces for nature and humanity to merge, we are reminded that our surroundings define us.

THE CHODGE

Director: Graeme Murray

Duration: 55 mins

Year: 2024

A documentary about the design and building of a unique private holiday home in New Zealand.

Darryl Church, founder of DCA Architects of Transformation, leads the narrative on the designing and building of a unique award-winning home on the picturesque banks of Lake Whakamaru. The film captures the essence of the location and landscape in a raw, honest, and often humorous, portrait.

A one-of-a-kind vision 15 years in the making creates a meeting point and sanctuary for a family to gather.

FILM
SPONSORED
BY



ARTHUR ERICKSON: BEAUTY BETWEEN THE LINES

Director: Danny Berish

Duration: 82 mins

Year: 2024

Known for his visionary designs and groundbreaking architectural philosophy, Erickson's work profoundly shaped the modernist landscape as one of the 20th century's most captivating architects.

Through intimate interviews, archival footage and a look at his most famous creations, the film reveals the delicate balance Erickson maintained between his creative genius and the challenges of his personal life, reflecting on the human experience of creativity, ambition and the price of greatness.



INZIDE

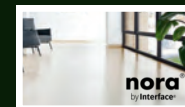
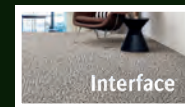
sustainable flooring solutions


Inzide is a New Zealand owned and operated company which has been supplying world leading, sustainable flooring solutions since 1996. Our exclusive brands, Forbo, Interface and nora are world's best practice in quality, design and sustainability leadership.

With studios in Auckland, Hamilton, Wellington and Christchurch, our dedicated team of flooring experts can help you find the right commercial flooring solutions for your needs. We also provide a unique flooring customisation and design service with our in-house concept designer. We are here to help you get the most out of your floor.

We believe strongly in product transparency, product stewardship and carbon neutrality. All the products we supply in New Zealand are independently tested for performance and sustainability. We also offer the only Ministry for Environment Certified flooring recycling programme in NZ called ReEntry. This takes Interface flooring at the end of its life and turns it back into new flooring, closing the loop on the product life cycle, reducing landfill. We have proudly been a Toitū, Net Carbon Neutral Organisation for more than 17 years.

We are known for Service, Performance, Design & Sustainability.



 www.inzide.co.nz
0800 800 656

SCHINDLER SPACE ARCHITECT

Director: Valentina Ganeva

Duration: 93 mins

Year: 2024

A true original, Austrian-born and educated R.M. Schindler laid the foundation for what is now known as the Californian style of indoor-outdoor living.

This documentary explores the bohemian genius of the highly acclaimed Schindler House in Los Angeles, investigating Schindler's philosophy of Space Architecture, while also raising questions about domestic architecture as a living entity that can shape culture and humanity.



ARCHITECTON

Director: Viktor Kossakovsky

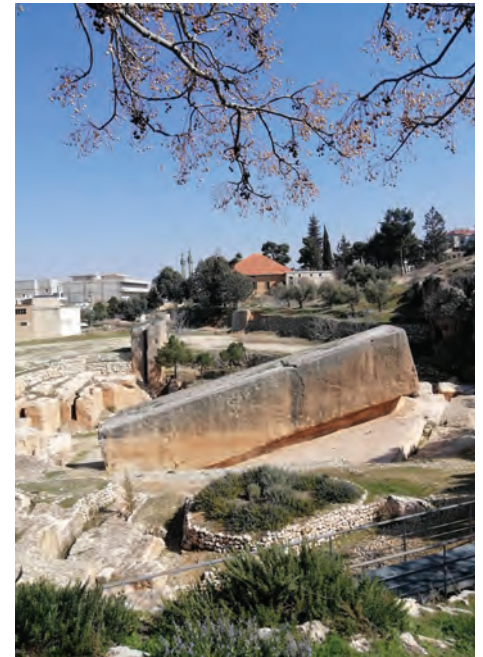
Duration: 97 mins

Year: 2024

Subtitles: Yes

Through the material of concrete and its ancestor: stone, comes an epic and poetic meditation on architecture around the globe.

Looking at how the design and construction of buildings from the ancient past reveal our destruction, it raises a fundamental question: 'How do we build, and how can we build better?'



LEWERENTZ DIVINE DARKNESS

Director: Sven Blume

Duration: 70 mins

Year: 2024

Subtitles: Yes

Sigurd Lewerentz (1885-1975) is internationally renowned as one of Sweden's greatest architects, but due to his aversion to being interviewed and recorded, he has long been shrouded in mystery.

Recently, however, a treasure trove of film and sound recordings of Lewerentz was found in a cellar in Lund; these never-seen-before recordings form the basis of this unique portrait of a figure often described as: enigmatic, mystical, and technical.



THE HOUSE: 6 POINTS OF DEPARTURE + THIS IS NOT A HOUSE

Director: Gregg Goggin + Morgan Neville

Duration: 48 mins + 30 mins

Year: 2024 + 2023

Subtitles: Yes

Inspired by 'land art' sculptors such as Michael Heizer and Robert Smithson, Thom Mayne was guided by the notion of house-to-natural-topography connection when designing the Crawford House.

Screens with *This is Not a House*

Art collectors Bruce Heavin and Lynda Weinman work with architect Robin Donaldson on an ambitious project and create an impressive, if slightly unconventional house. Organised in two levels, it is as much about working with the topography of the site as it is about creating a spectacular object.





blum

AVENTOS top

In the kitchen, ergonomics are just as crucial as design. It's not only a functional workspace but also a place to gather. The AVENTOS top family has been developed to enhance the existing lift system range and offer a perfect blend of functionality and sophisticated style, enhancing your space to be both beautiful and practical.

www.blum.com

E.1027 – EILEEN GRAY AND THE HOUSE BY THE SEA + HER BLUEPRINT, AOTEAROA

Directors: Beatrice Minger,
Christoph Schaub + Miriama Toms

Duration: 89 mins + 16 mins

Year: 2024 + 2023

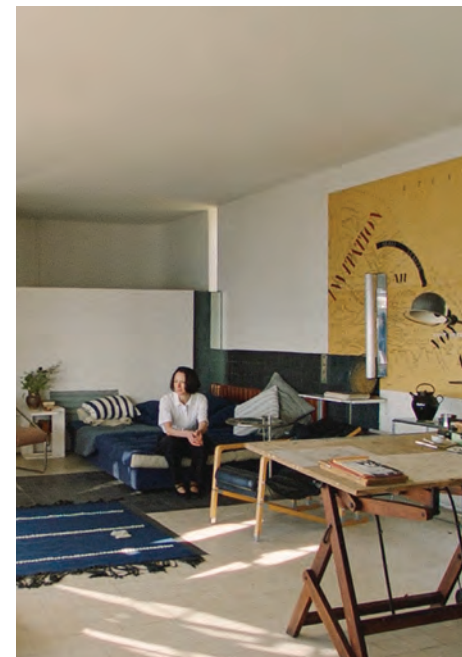
Subtitles: Yes

Eileen Gray's villa, E.1027, on the Côte d'Azur is considered a milestone in architectural history.

Enjoy a cinematic journey into the mind of Eileen Gray, offering a story about the power of female expression and men's desire to control it.

Preceded by Her Blueprint, Aotearoa

A moment in time depicting the everyday professional lives of some of the key female players in the design and construction sector in Aotearoa.



There's a new roof in town,
make it yours.



COLORSTEEL TidalDrift® Matte, Tray Profile

 **COLORSTEEL**
NEXT GENERATION
WITH ACTIVATE® TECHNOLOGY

ACTIVATE®
TECHNOLOGY

UP TO
50
YR
WARRANTY

DESIGNED FOR
NEW ZEALAND



An innovative new solution that takes form,
function and durability to the next level – backed
with industry leading warranties of up to 50 years.

Find out more at colorsteel.co.nz

MARY HEILMANN: WAVES, ROADS & HALLUCINATIONS

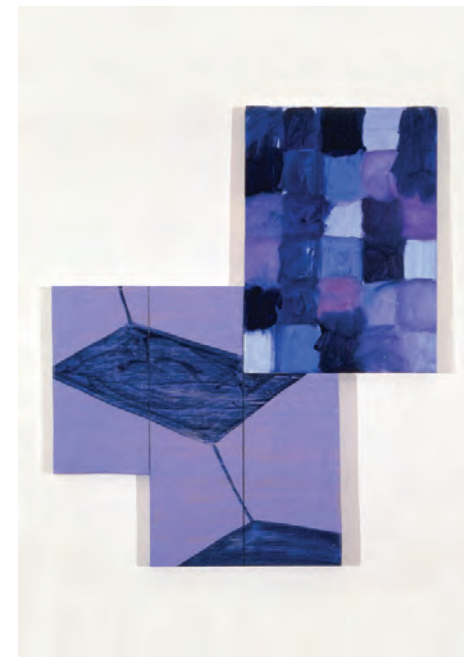
Director: Matt Creed

Duration: 73 mins

Year: 2023

Influenced by 1960s counterculture,
the Beatniks, and the free speech
movement, Mary Heilmann ranks
amongst the most influential
abstract painters of her generation.

Offering a visually immersive
journey, using rare archival material
and in-studio conversations—taking
place in the artist's studios in
Bridgehampton and Tribeca—this
film explores her approach to art
and her life's practice.



WORLDS OF URSULA K. LE GUIN

Director: Arwen Curry

Duration: 68 mins

Year: 2018

Explore the remarkable life and legacy of the late feminist author Ursula K. Le Guin.

Heralded as a 'world builder' and an 'architect of language', Le Guin is best known for her groundbreaking science fiction and fantasy works, such as *A Wizard of Earthsea*, *The Left Hand of Darkness*, and *The Dispossessed*.

Her countless essays and poems depict alternative worlds in politics, the natural environment, gender, religion, sexuality, and ethnography.



I AM MARTIN PARR

Director: Lee Shulman

Duration: 68 mins

Year: 2024

Since the 1970s, English photographer Martin Parr has held up a sometimes tender, sometimes critical and always mischievous mirror to our times, forcing us to take a hard look at how consumer society has shaped our lives.

Discover the maverick behind some of the most iconic images of the past century on an intimate and exclusive road trip across England with the uncompromising Parr, whose subjects, frames and colours have revolutionised contemporary photography and invented a political, humanist and accessible photographic language.



VIVA NIKI – THE SPIRIT OF NIKI DE SAINT PHALLE

Director: Michiko Matsumoto

Duration: 76 mins

Year: 2024

Subtitles: Yes

Investigating the monumental Tarot Garden and the Stravinsky Fountain in Paris, Japanese director Michiko Matsumoto guides us on a joyous retrospective of her friend and French American artist Niki de Saint Phalle, by combining photographs from her personal archive, with new footage.

The film is a heart-warming celebration of de Saint Phalle's ability to mix serious feminism with playful frivolity, and the decorative with the disturbing.



The HOME of New Zealand Architecture & Design



Promo period:
27 March - 1 August 2025

Beyond the pages—experience HOME's world of design through our latest content and exclusive videos at homemagazine.nz

Subscribe now
homemagazine.nz/subscribe

Subscribe, renew, or extend your subscription to HOME with promo code RADFF24 and save a further 20% off the regular subscription price.

Terms and conditions apply. Offer available in NZ only and applies to 1-year and 2-year print subscriptions for HOME Magazine only.



JACQUEMUS: THE PRINCE OF TODAY'S FASHION + RICHARD SERRA: YOU ARE THE SUBJECT

Director: Loïc Prigent + Rafael
Salazar Moreno

Duration: 52 mins + 22 mins

Year: 2023 + 2023

Subtitles: Yes

The film retraces the story of fashion designer, Simon Porte Jacquemus, founder and artistic director of his brand Jacquemus. Told through 10 years of exclusive archives and backstage footage, we get front row seats from his creative process and how he works with his teams, to the heart of a Jacquemus fashion show.

Preceded by Richard Serra: You are the Subject

A Richard Serra installation calls into question not only the legacy of the artist, but of humanity itself.



THE DOCUMERICA PROJECT + TĀWHARAU LANE: A SUSTAINABILITY EXEMPLAR

Director: Pierre-François Didek
+ Miriama Toms

Duration: 52 mins + 14 mins

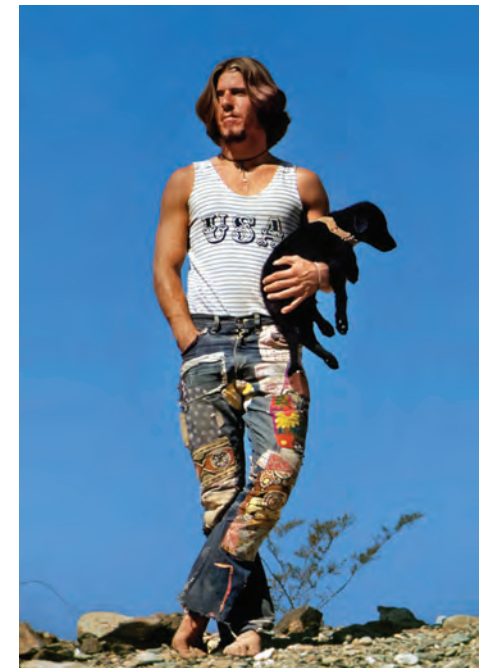
Year: 2024 + 2025

Subtitles: Yes

In the 70s, 100 photographers roamed America to document the environmental movement after 30 years of unbridled consumerism. Nearly 80,000 images encompassed the immensity of a time when America was at its most fragile, in the midst of a social, economic, and political crisis, exacerbated by the Vietnam War.

Preceded by Tāwharau Lane: A Sustainability Exemplar

A short film about a multi-award winning project in the Highbrook Business Park.



THE SENSE OF TUNING

Directors: Ila Bêka,
Louise Lemoine

Duration: 96 mins

Year: 2023

Subtitles: Yes

Architect Bijoy Jain, of Studio Mumbai, welcomes us into his house and sheds light on the surprising human systems behind the chaos of Mumbai, and highlights the tendency to work with local materials, such as clay bricks.

Along the way, he explains how spaces influence our emotional and physical wellbeing, revealing his life philosophy in a candid and profound manner.

FILM
SPONSORED
BY

BRICKWORKS



DALE FRANK NOBODY'S SWEETIE

Director: Jenny Hicks

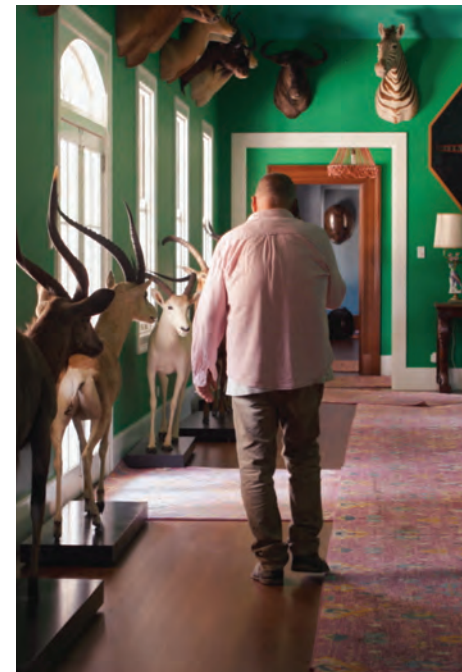
Duration: 107 mins

Year: 2024

A charming portrait of Dale Frank, Australia's foremost contemporary and conceptual artist, eight weeks out from his 40th exhibition at Sydney's Roslyn Oxley9 Gallery.

Throughout this candid biography, we learn what it means to be a professional artist. The stakes are high in the art world, and Frank spends as lavishly as he creates.

His paintings fund other colourful exploits: his ever-evolving rural estate where he lives amidst the largest private Natural History Collection in Australia, and the building of a 50-hectare exotic arid-zone botanical garden in his backyard.



WE THE OTHERS + FRUITVALE: A COMMUNITY COMPASS FOR REGENERATION

Director: Francesca Molteni +
Miriam Toms

Duration: 55 mins + 12 mins

Year: 2024 + 2025

Subtitles: Yes

Acclaimed Brazilian duo Fernando and Humberto Campana, have not only left an indelible mark on the design world but have also been engaged in social initiatives including a vast park where they have planted 20,000 native tree seedlings and are constructing 12 green pavilions.

*Preceded by Fruitvale: A Community
Compass for Regeneration*

As the community cares for the whenua and awa, they also strengthen bonds and create a better environment for the next generation.



SITTING STILL

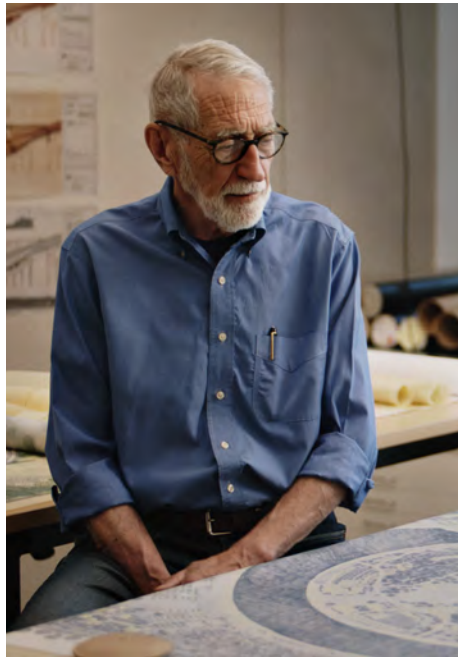
Director: Gina Angelone

Duration: 90 mins

Year: 2024

Get inside the mind of distinguished artist, scholar, author, and one of the most renowned and significant landscape architects practicing in the world today, Laurie Olin, whose concerns have defined his life's work: urbanisation, a lost connection to nature, economic marginalisation, and the grave necessity of humanity in design.

In a time when global values increasingly reflect profit over people, Olin's vision has always been to create a more democratic and egalitarian society through healthy, shared public space.



Find your
architectural
designer >

adnz.org.nz/find

AD
NZ
+ Architectural
Designers
New Zealand

EVER THE LAND 10th Year Anniversary

Directors: Sarah Grohnert

Duration: 90 mins

Year: 2015

Subtitles: Yes

Ten years after its cinematic release, we revisit the powerful story of Ngāi Tūhoe as they undertake the design and construction of a building that will enhance the connection between their people and their land.

The result is an architectural gem of a community centre that utilises radically sustainable methods.

Tradition and environmentalism are brought together, and the film gives us a stirring depiction of Indigenous pride.



Resene
ARCHITECTURE & DESIGN
FILM FESTIVAL

CHECK OUT OUR
NEW WEBSITE AND JOIN
OUR NEWSLETTER

[ARCHITECTUREANDDESIGNFILMFESTIVAL.CO.NZ](https://architectureanddesignfilmfestival.co.nz)



WORLD PREMIERE: THE CHODGE

- ✦ Ticket includes welcome drink, nibbles, world premiere film screening and Q&A following the film screening
- 💰 \$30
- 📍 Tauranga, Event Cinemas Tauranga Crossing
- 📅 Monday 28 April, 5:45pm arrival for 6:30pm screening

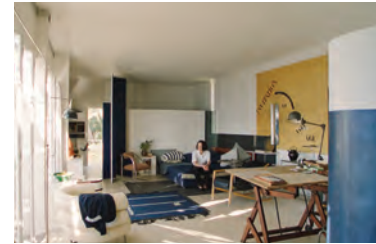
OPENING NIGHT: THE CHODGE

- ✦ Ticket includes a glass of wine, nibbles, welcome introduction and film screening
- 💰 \$37.50
- 📍 Auckland, Rialto Cinemas Newmarket
- 📅 Thursday 1 May, 5:45pm arrival for 6:30pm screening



ADNZ Q&A: THE CHODGE

- ✦ Ticket includes the film screening and Q&A following the film screening
- 💰 \$25.50
- 📍 Auckland, Rialto Cinemas Newmarket
- 📅 Sunday 4 May, 3:45pm
- 📅 Monday 5 May, 6pm
- 📍 Wellington, Te Papa
- 📅 Sunday 25 May, 2pm
- 📍 Wellington, Embassy Theatre
- 📅 Monday 26 May, 6:15pm
- 📍 Christchurch, Deluxe Cinemas
- 📅 Thursday 22 May, 6pm
- 📅 Tuesday 27 May, 6pm
- 📍 Dunedin, Rialto Cinemas
- 📅 Tuesday 3 June, 6pm
- 📍 Napier, MTG Century Theatre
- 📅 Thursday 29 May, 7pm
- 📍 Nelson, State Cinemas
- 📅 Thursday 8 May, 6:15pm



PREMIERE NIGHT: E.1027 – EILEEN GRAY AND THE HOUSE BY THE SEA

- ✦ Ticket includes a glass of bubbles, goodie bag and film screening
- 💰 \$35.50
- 📍 Auckland, Rialto Cinemas Newmarket
- 📅 Wednesday 7 May, 6pm arrival for 6:15pm screening



A+W & NAWIC Q&A: E.1027 – EILEEN GRAY AND THE HOUSE BY THE SEA

- ✦ Ticket includes the film screening and Q&A following the film screening
- 💰 \$25.50
- 📍 Auckland, Rialto Cinemas Newmarket
- 📅 Thursday 15 May, 6pm
- 📍 Wellington, Light House Cinema Cuba
- 📅 Thursday 22 May, 5:45pm
- 📍 Christchurch, Deluxe Cinemas
- 📅 Wednesday 28 May, 5:45pm

MOTHER'S DAY SPECIAL EVENT: E.1027 – EILEEN GRAY AND THE HOUSE BY THE SEA

- ✦ Ticket includes a glass of bubbles, spot prizes and film screening
- 💰 \$31.50
- 📍 Auckland, Rialto Cinemas Newmarket
- 📅 Sunday 11 May, 2pm arrival for 2:15pm screening



ART LOVERS' FILM NIGHT: MARY HEILMANN: WAVES, ROADS & HALLUCINATIONS

- ✦ Ticket includes a glass of bubbles, spot prizes and film screening
- 💰 \$31.50
- 📍 Auckland, Rialto Cinemas Newmarket
- 📅 Thursday 8 May, 6pm arrival for 6:15pm screening



FESTIVAL SELECTS DATES

- 📍 Blenheim, Event Cinemas
- 📅 29 May - 4 June
- 📍 Whangārei, Event Cinemas
- 📅 29 May - 4 June
- 📍 New Plymouth, Event Cinemas
- 📅 5 - 11 June
- 📍 Palmerston North, Event Cinemas
- 📅 5 - 11 June
- 📍 Hamilton, Event Cinemas Chartwell
- 📅 12 - 18 June
- 📍 Tauranga, Event Cinemas Tauranga Central
- 📅 19 - 25 June



MORNING TEA SCREENINGS

- ✦ Ticket includes a complimentary morning tea with film screening
- 📍 Christchurch, Deluxe Cinemas
- 📅 Monday – Friday, 10am sessions

TICKETING INFORMATION

Cinemas

Rialto Cinemas Newmarket

167-169 Broadway,
Newmarket, Auckland
09 369 2417
rialto.co.nz



State Cinemas

91 Trafalgar St,
Nelson
03 548 3885
statecinemas.co.nz



Embassy Theatre

10 Kent Terrace,
Wellington
04 384 7656 *no phone bookings
embassytheatre.co.nz



Light House Cinema Cuba

29 Wigan Street,
Te Aro, Wellington
04 385 3337
lighthousecinema.co.nz



Light House Cinema Petone

52 Beach Street,
Petone, Wellington
04 939 2061
lighthousecinema.co.nz



Te Papa

Soundings Theatre, Level 2,
Te Papa Museum of New Zealand,
55 Cable Street, Wellington
04 381 7000 *no phone bookings
tepapa.govt.nz/visit/events



Deluxe Cinemas

Shop 24, The Tannery,
3 Garlands Road,
Woolston, Christchurch
03 389 5360
deluxecinemas.co.nz



Rialto Cinemas

11 Moray Place,
Dunedin
03 474 2200 *no phone bookings
rialto.co.nz



MTG Century Theatre

9 Herschell Street,
Napier
06 835 7781 *no phone bookings
mtghawkesbay.com



Pricing & Booking

Please check with cinemas for festival pricing. Special film festival pricing applies to all sessions and prices vary by cinema and for events screening as part of the festival.

Discounts apply for student, senior (65 years plus) and children (14 years and under).

Booking fees apply for online and phone bookings.

All Auckland, Nelson, Christchurch and Wellington (excluding Te Papa) sessions will have allocated seating; pre-booking is recommended.

All cinemas are wheelchair accessible however seating is limited. Please contact the cinema directly to arrange bookings.

ID will be required for discounted tickets (senior, student) and restricted films.

All films playing in the festival are 'no free tickets'. 'Cinema vouchers', 'movie money' and 'ticket discount' offers cannot be used for festival films.

Group Bookings

We offer 'group booking' discount rates, for groups of 30 or more people who attend the same session and pay in one transaction. Please email contact@architectureanddesignfilmfestival.co.nz for more information.

NZIA & ADNZ Accreditation

Both Architectural Designers New Zealand (ADNZ) and the NZ Registered Architects Board (NZRAB) offer Continuing Professional Development (CPD) points for films watched in the festival. ADNZ and NZIA members should apply for these points through the ADNZ or NZRAB websites.



Go Media is NZ's largest Digital Billboard company!

Reaching more Kiwis in more areas of the country than any other digital billboard company



Outdoor
Advertising
Solutions

www.gomedia.co.nz

SCHEDULE BY CINEMA

AUCKLAND, RIALTO CINEMAS NEWMARKET

* no screening of Her Blueprint, Aotearoa in this session

📅 Thursday 1 May

SPECIAL EVENT:
OPENING NIGHT
● THE CHODGE
● 5:45PM ARRIVAL
● 6:30PM SCREENING

📅 Friday 2 May

11:15am, Schindler
Space Architect
1:15pm, We the Others
3pm, Sense of Tuning
5:15pm, I am Martin Parr
6:45pm, Ever the Land
8:40pm, Dale Frank

📅 Saturday 3 May

11am, The House +
This is Not a House
12:45pm, Mary Heilmann
2:30pm, Viva Niki
4:15pm, Sitting Still
6:15pm, Arthur Erickson
8:15pm, Schindler
Space Architect

📅 Sunday 4 May

10:15am, We the Others
11:45am, Dale Frank
2pm, Ursula K. Le Guin
SPECIAL EVENT: ADNZ Q&A
● THE CHODGE
● 3:45PM
5:45pm, Lewerentz
Divine Darkness
7:30pm, Sense of Tuning

📅 Monday 5 May

10:30am, Viva Niki
12:15pm, Architecton
2:15pm, Documerica Project
SPECIAL EVENT: ADNZ Q&A
● THE CHODGE
● 6PM
8pm, Ursula K. Le Guin

📅 Tuesday 6 May

10:45am, Mary Heilmann
12:30pm, The House +
This is Not a House

2:15pm, Lewerentz
Divine Darkness
6pm, Dale Frank
8:15pm, Schindler
Space Architect

📅 Wednesday 7 May

10:45am, Arthur Erickson
12:30pm, Schindler
Space Architect
2:30pm, I am Martin Parr

SPECIAL EVENT:
PREMIERE NIGHT
● EILEEN GRAY
● 6PM ARRIVAL
● 6:15PM SCREENING

8:30pm, Architecton

📅 Thursday 8 May

11am, Ursula K. Le Guin
12:45pm, Documerica Project
2:15pm, Jacquemus

SPECIAL EVENT:
ART LOVERS' FILM NIGHT
● MARY HEILMANN
● 6PM ARRIVAL
● 6:15PM SCREENING

8:15pm, The House +
This is Not a House

📅 Friday 9 May

11am, Architecton
1pm, Eileen Gray*
3pm, Sitting Still
5:05pm, We the Others
6:35pm, Eileen Gray
8:40pm, Viva Niki

📅 Saturday 10 May

11am, I am Martin Parr
12:30pm, Sense of Tuning
2:30pm, Schindler
Space Architect
4:30pm, Dale Frank
6:45pm, The Chodge
8:15pm, Mary Heilmann

📅 Sunday 11 May

10am, Eileen Gray
12:15pm, Arthur Erickson
SPECIAL EVENT:
MOTHER'S DAY
● EILEEN GRAY*
● 2PM ARRIVAL
● 2:15PM SCREENING
4:15pm, Lewerentz
Divine Darkness

6pm, We the Others
7:30pm, Sitting Still

📅 Monday 12 May

10:30am, Schindler
Space Architect
12:30pm, Jacquemus
2:15pm, The House +
This is Not a House
6pm, I am Martin Parr
7:30pm, The Chodge

📅 Tuesday 13 May

10:45am, Dale Frank
1pm, Ursula K. Le Guin
2:30pm, Viva Niki
6:15pm, Architecton
8:15pm, Arthur Erickson

📅 Wednesday 14 May

10:45am, The Chodge
12:15pm, Eileen Gray
2:30pm, We the Others
6pm, Sense of Tuning
8pm, Schindler
Space Architect

📅 Thursday 15 May

11am, I am Martin Parr
12:30pm, Mary Heilmann
2:15pm, Architecton
SPECIAL EVENT:
A+W & NAWIC Q&A
● EILEEN GRAY
● 6PM
8:40pm, The Chodge

📅 Friday 16 May

10:45am, Lewerentz
Divine Darkness
12:30pm, Sitting Still
3pm, Arthur Erickson
5:15pm, Jacquemus
7pm, Viva Niki
8:40pm, Eileen Gray

📅 Saturday 17 May

11:15am, Arthur Erickson
1pm, Jacquemus
2:45pm, The Chodge
4:15pm, Eileen Gray
6:30pm, The House +
This is Not a House
8:15pm, Schindler
Space Architect

SCHEDULE BY CINEMA

📅 Sunday 18 May

10:30am, Sense of Tuning
12:45pm, The Chodge
2:15pm, Documerica Project
3:45pm, Jacquemus
5:30pm, Eileen Gray*
7:30pm, Dale Frank

📅 Monday 19 May

10:15am, Sitting Still
12:15pm, Schindler
Space Architect
6pm, Lewerentz
Divine Darkness
7:30pm, Eileen Gray

📅 Tuesday 20 May

11am, Documerica Project
12:30pm, Sense of Tuning
6:30pm, Ursula K. Le Guin
8pm, Architecton

📅 Wednesday 21 May

10:45am, I am Martin Parr
12:15pm, Eileen Gray
6:30pm, Jacquemus
8:15pm, Sense of Tuning

NELSON, STATE CINEMAS

📅 Thursday 8 May

SPECIAL EVENT: ADNZ Q&A
● THE CHODGE
● 6:15PM

8:15pm, Documerica Project

📅 Friday 9 May

5:10pm, I am Martin Parr
6:45pm, Eileen Gray*
8:30pm, Mary Heilmann

📅 Saturday 10 May

10:30am, Lewerentz
Divine Darkness
12:15pm, Dale Frank
2:30pm, Jacquemus
4:15pm, Viva Niki
6pm, Eileen Gray
8:15pm, Architecton

📅 Sunday 11 May

12pm, Ursula K. Le Guin

1:30pm, Arthur Erickson
3:15pm, Mary Heilmann
4:55pm, The Chodge
6:15pm, The House +
This is Not a House
8pm, I am Martin Parr

📅 Monday 12 May

6pm, We the Others
7:45pm, Sense of Tuning

📅 Tuesday 13 May

6pm, Arthur Erickson
7:45pm, Schindler
Space Architect

📅 Wednesday 14 May

6pm, Ursula K. Le Guin
7:45pm, Sitting Still

📅 Thursday 15 May

6pm, Sense of Tuning
8pm, Jacquemus

📅 Friday 16 May

5:30pm, Lewerentz
Divine Darkness
7:10pm, The Chodge
8:30pm, Eileen Gray

📅 Saturday 17 May

10.45am, Eileen Gray*
12:30pm, Sense of Tuning
2:30pm, Architecton
4:30pm, Schindler
Space Architect
6:30pm, Mary Heilmann
8:15pm, Viva Niki

📅 Sunday 18 May

12pm, I am Martin Parr
1.30pm, The Chodge
2:50pm, Eileen Gray
5pm, We the Others
6:30pm, Lewerentz
Divine Darkness
8:05pm, Dale Frank

📅 Monday 19 May

6:15pm, Documerica Project
7:45pm, Schindler
Space Architect

📅 Tuesday 20 May

6pm, The House +

This is Not a House
7:45pm, Ever the Land

📅 Wednesday 21 May

6pm, Viva Niki
7:45pm, Sitting Still

WELLINGTON, EMBASSY THEATRE

📅 Thursday 15 May

6:30pm, The Chodge
8pm, Documerica Project

📅 Friday 16 May

5:30pm, Ursula K. Le Guin
7pm, I am Martin Parr
8:30pm, Ever the Land

📅 Saturday 17 May

11:30am, The Chodge
12:45pm, The House +
This is Not a House
2:30pm, Arthur Erickson
4:30pm, Eileen Gray*
6:15pm, Eileen Gray
8:30pm, Dale Frank

📅 Sunday 18 May

11:15am, Ursula K. Le Guin
12:45pm, Lewerentz
Divine Darkness
2:30pm, Sense of Tuning
4:30pm, The Chodge
6pm, Viva Niki
7:45pm, Schindler
Space Architect

📅 Monday 19 May

6pm, Architecton
8pm, Mary Heilmann

📅 Tuesday 20 May

6:15pm, Schindler
Space Architect
8:15pm, Arthur Erickson

📅 Wednesday 21 May

6:30pm, Eileen Gray*
8:15pm, Eileen Gray

📅 Friday 23 May

3:30pm, Sitting Still

SCHEDULE BY CINEMA

3:30pm, Jacquemus
5:15pm, Mary Heilmann
7pm, We the Others
8:30pm, Sense of Tuning

🎬 **Saturday 24 May**
10:45am, Schindler
Space Architect
12:45pm, Dale Frank
3pm, I am Martin Parr
4:30pm, Architecton
6:30pm, Arthur Erickson
8:15pm, The House +
This is Not a House

🎬 **Sunday 25 May**
11am, We the Others
12:30pm, Mary Heilmann
2:15pm, Viva Niki
4pm, Eileen Gray
6:15pm, Documerica Project
7:45pm, Ursula K. Le Guin

🎬 **Monday 26 May**
SPECIAL EVENT: ADNZ Q&A
● THE CHODGE
● 6:15PM

8:15pm, Jacquemus

🎬 **Tuesday 27 May**
6:15pm, Sense of Tuning
8:15pm, Viva Niki

🎬 **Wednesday 28 May**
6:15pm, Lewerentz
Divine Darkness
8pm, Sitting Still

WELLINGTON, LIGHT
HOUSE CINEMA CUBA

🎬 **Thursday 15 May**
6:15pm, Ursula K. Le Guin
7:45pm, Dale Frank

🎬 **Friday 16 May**
1:30pm, Sense of Tuning
6:30pm, Ursula K. Le Guin
8:15pm, Eileen Gray

🎬 **Saturday 17 May**
2:15pm, Mary Heilmann
4pm, Viva Niki
8:15pm, The Chodge

🎬 **Sunday 18 May**

2pm, Eileen Gray
4:15pm, We the Others
5:45pm, I am Martin Parr

🎬 **Monday 19 May**
11am, Sitting Still
5:45pm, Jacquemus
7:30pm, Documerica Project

🎬 **Tuesday 20 May**
11am, Lewerentz
Divine Darkness
6:30pm, We the Others
8pm, Ursula K. Le Guin

🎬 **Wednesday 21 May**
11am, Dale Frank
6:15pm, Mary Heilmann
8pm, Architecton

🎬 **Thursday 22 May**
1:30pm, Jacquemus
SPECIAL EVENT:
A+W & NAWIC Q&A
● EILEEN GRAY
● 5:45PM
8:40pm, Arthur Erickson

🎬 **Friday 23 May**
1:30pm, Schindler
Space Architect
6:30pm, The Chodge
8pm, Lewerentz
Divine Darkness

🎬 **Saturday 24 May**
1:45pm, Arthur Erickson
3:30pm, The Chodge
8pm, Sense of Tuning

🎬 **Sunday 25 May**
2:30pm, Ursula K. Le Guin
4pm, The House +
This is Not a House
5:45pm, Ever the Land

🎬 **Monday 26 May**
11am, Eileen Gray*
5:45pm, Lewerentz
Divine Darkness
7:30pm, Sitting Still

🎬 **Tuesday 27 May**
11am, Architecton
6pm, The House +
This is Not a House
7:45pm, Documerica Project

🎬 **Wednesday 28 May**
11am, I am Martin Parr
6:30pm, Viva Niki
8:15pm, Schindler
Space Architect

WELLINGTON, LIGHT
HOUSE CINEMA PETONE

🎬 **Thursday 15 May**
6pm, I am Martin Parr

🎬 **Friday 16 May**
11am, Mary Heilmann
6pm, Architecton

🎬 **Saturday 17 May**
4:30pm, We the Others
6pm, Eileen Gray*

🎬 **Sunday 18 May**
4:30pm, The Chodge
6pm, Dale Frank

🎬 **Monday 19 May**
6pm, Ever the Land

🎬 **Tuesday 20 May**
6:30pm, Sitting Still

🎬 **Wednesday 21 May**
11am, Arthur Erickson
6pm, Documerica Project

🎬 **Thursday 22 May**
11am, Schindler
Space Architect
6:30pm, Lewerentz
Divine Darkness

🎬 **Friday 23 May**
11am, Viva Niki
6pm, Eileen Gray

🎬 **Saturday 24 May**
4:30pm, Ursula K. Le Guin
6pm, Mary Heilmann

🎬 **Sunday 25 May**
4:30pm, I am Martin Parr
6pm, Sense of Tuning

🎬 **Monday 26 May**
6pm, Schindler
Space Architect

🎬 **Tuesday 27 May**
6pm, The Chodge

SCHEDULE BY CINEMA

🎬 **Wednesday 28 May**
11am, Lewerentz
Divine Darkness
6:30pm, Jacquemus

🎬 **Thursday 29 May**
6pm, Ursula K. Le Guin

🎬 **Friday 30 May**
6:15pm, The House +
This is Not a House

🎬 **Saturday 31 May**
6:15pm, Viva Niki

🎬 **Sunday 1 June**
6pm, Arthur Erickson

🎬 **Monday 2 June**
3:30pm, Eileen Gray

WELLINGTON, TE PAPA

🎬 **Saturday 24 May**
11am, I am Martin Parr
2pm, Eileen Gray

🎬 **Sunday 25 May**
11am, Dale Frank
SPECIAL EVENT: ADNZ Q&A
● THE CHODGE
● 2PM

CHRISTCHURCH,
DELUXE CINEMAS

🎬 **Thursday 15 May**
6:30pm, The Chodge
8pm, Documerica Project

🎬 **Friday 16 May**
10am, We the Others
11:30am, Ursula K. Le Guin
6:15pm, Viva Niki
8pm, Schindler
Space Architect

🎬 **Saturday 17 May**
12:45pm, Lewerentz
Divine Darkness
2:30pm, Arthur Erickson
4:15pm, The Chodge
5:45pm, Eileen Gray
8pm, I am Martin Parr

🎬 **Sunday 18 May**
12:45pm, Eileen Gray*
2:30pm, Mary Heilmann
4:15pm, Viva Niki
6pm, The House +
This is Not a House
7:45pm, Architecton

🎬 **Monday 19 May**
10am, Schindler
Space Architect
12pm, Dale Frank
6pm, Sense of Tuning
8pm, Jacquemus

🎬 **Tuesday 20 May**
10am, Eileen Gray
12:15pm, Architecton
6:15pm, Lewerentz
Divine Darkness
8pm, Mary Heilmann

🎬 **Wednesday 21 May**
10am, The House +
This is Not a House
11:45am, Jacquemus
6:30pm, Ursula K. Le Guin
8pm, Sitting Still

🎬 **Thursday 22 May**
10am, Eileen Gray*
11:45am, I am Martin Parr
SPECIAL EVENT: ADNZ Q&A
● THE CHODGE
● 6PM
8pm, Documerica Project

🎬 **Friday 23 May**
10am, Viva Niki
11:45am, Sense of Tuning
6:30pm, Arthur Erickson
8:15pm, We the Others

🎬 **Saturday 24 May**
11:45am, Ursula K. Le Guin
1:15pm, Schindler
Space Architect
3:15pm, I am Martin Parr
4:45pm, The House +
This is Not a House
6:30pm, Mary Heilmann
8:15pm, Dale Frank

🎬 **Sunday 25 May**
12:45pm, The Chodge
2:15pm, Eileen Gray

4:30pm, We the Others
6pm, Eileen Gray*
7:45pm, Sense of Tuning

🎬 **Monday 26 May**
10am, Arthur Erickson
11:45am, Lewerentz
Divine Darkness
6pm, Architecton
8pm, Sitting Still

🎬 **Tuesday 27 May**
10am, Dale Frank
12:15pm, Documerica Project
SPECIAL EVENT: ADNZ Q&A
● THE CHODGE
● 6PM
8pm, Jacquemus

🎬 **Wednesday 28 May**
10am, Mary Heilmann
11:45am, Sitting Still

SPECIAL EVENT:
A+W & NAWIC Q&A
● EILEEN GRAY
● 5:45PM

8:30pm, Ever the Land

DUNEDIN,
RIALTO CINEMAS

🎬 **Thursday 29 May**
6:30pm, The Chodge
8pm, Documerica Project

🎬 **Friday 30 May**
11am, Eileen Gray
1:15pm, Jacquemus
6:15pm, Eileen Gray*
8pm, Schindler Space Architect

🎬 **Saturday 31 May**
11:30am, We the Others
1pm, Lewerentz
Divine Darkness
2:45pm, Arthur Erickson
4:30pm, The Chodge
6pm, Eileen Gray
8:15pm, I am Martin Parr

🎬 **Sunday 1 June**
11:15am, The Chodge
12:45pm, Sense of Tuning
2:45pm, Mary Heilmann
4:30pm, Viva Niki

| SCHEDULE BY CINEMA | | |
|--|--|--|
| | | |
| 6:15pm, The House + This is Not a House 8pm, Architecton | <div> <div></div> <div> Monday 9 June 11:30am, Arthur Erickson 5:45pm, The House + This is Not a House 7:30pm, Sitting Still </div> </div> | 5:45pm, Arthur Erickson 7:45pm, Schindler Space Architect |
| <div> <div></div> <div> Monday 2 June 10:45am, Jacquemus 12:30pm, Ursula K. Le Guin 2pm, Dale Frank 4:15pm, We the Others 6pm, Lewerentz Divine Darkness 7:45pm, Schindler Space Architect </div> </div> | <div> <div></div> <div> Tuesday 10 June 11am, Dale Frank 6:15pm, Documerica Project 7:45pm, Architecton </div> </div> | <div> <div></div> <div> Wednesday 4 June 2:15pm, Viva Niki 4:15pm, Documerica Project 6pm, Ursula K. Le Guin </div> </div> |
| <div> <div></div> <div> Tuesday 3 June 11am, Sitting Still SPECIAL EVENT: ADNZ Q&A ● THE CHODGE ● 6PM 8pm, Eileen Gray* </div> </div> | | <div> <div></div> <div> Thursday 5 June 1:45pm, Lewerentz Divine Darkness 3:30pm, Sitting Still 5:30pm, Sense of Tuning 7:45pm, Ever the Land </div> </div> |
| <div> <div></div> <div> Wednesday 4 June 11am, Viva Niki 6:15pm, Ursula K. Le Guin 7:45pm, Jacquemus </div> </div> | <div> <div></div> <div> Thursday 29 May SPECIAL EVENT: ADNZ Q&A ● THE CHODGE ● 7PM </div> </div> | <div> <div></div> <div> Friday 6 June 2:45pm, We the Others 4:30pm, The House + This is Not a House 6:15pm, The Chodge 7:45pm, Eileen Gray </div> </div> |
| <div> <div></div> <div> Thursday 5 June 11am, Lewerentz Divine Darkness 6pm, Arthur Erickson 7:45pm, Sense of Tuning </div> </div> | <div> <div></div> <div> Friday 30 May 2:30pm, Sitting Still 4:30pm, Ursula K. Le Guin 7:45pm, Mary Heilmann </div> </div> | <div> <div></div> <div> Saturday 7 June 11:30am, Architecton 1:30pm, Sense of Tuning 3:45pm, Schindler Space Architect 6pm, Mary Heilmann 7:45pm, Viva Niki </div> </div> |
| <div> <div></div> <div> Friday 6 June 11am, I am Martin Parr 12:30pm, Sitting Still 5:15pm, The Chodge 6:30pm, Viva Niki 8:15pm, Eileen Gray </div> </div> | <div> <div></div> <div> Saturday 31 May 12:15pm, Lewerentz Divine Darkness 2pm, Arthur Erickson 4pm, The Chodge 5:30pm, Eileen Gray 7:45pm, I am Martin Parr </div> </div> | <div> <div></div> <div> Sunday 8 June 12pm, The Chodge 1:30pm, Eileen Gray 3:45pm, I am Martin Parr 5:30pm, We the Others 7:15pm, Dale Frank </div> </div> |
| <div> <div></div> <div> Saturday 7 June 11am, Eileen Gray* 12:45pm, The House + This is Not a House 2:30pm, Architecton 4:30pm, Schindler Space Architect 6:30pm, Mary Heilmann 8:15pm, Dale Frank </div> </div> | <div> <div></div> <div> Sunday 1 June 2:15pm, Mary Heilmann 4pm, Viva Niki 5:45pm, The House + This is Not a House 7:45pm, Architecton </div> </div> | <div> <div></div> <div> Monday 9 June 3:30pm, Architecton 5:45pm, Documerica Project 7:30pm, Ursula K. Le Guin </div> </div> |
| <div> <div></div> <div> Sunday 8 June 10:45am, Documerica Project 12:15pm, The Chodge 1:45pm, Eileen Gray 4pm, I am Martin Parr 5:45pm, We the Others 7:30pm, Ursula K. Le Guin </div> </div> | <div> <div></div> <div> Monday 2 June 11:15am, Eileen Gray 1:30pm, Dale Frank 3:45pm, We the Others 5:30pm, Lewerentz Divine Darkness 7:15pm, Sense of Tuning </div> </div> | <div> <div></div> <div> Tuesday 10 June 1:30pm, Schindler Space Architect 3:45pm, Arthur Erickson 5:45pm, The House + This is Not a House 7:45pm, Sitting Still </div> </div> |
| | <div> <div></div> <div> Tuesday 3 June 2:15pm, I am Martin Parr 4pm, Jacquemus </div> </div> | <div> <div></div> <div> Wednesday 11 June 1:45pm, Mary Heilmann 3:30pm, Dale Frank 5:45pm, Viva Niki 7:45pm, Jacquemus </div> </div> |

| SCHEDULE BY CINEMA | | |
|---|---|--|
| | | |
| <div> <div></div> <div> BLenheim, Event Cinemas </div> </div> | <div> <div></div> <div> NEW PLYMOUTH, Event Cinemas </div> </div> | <div> <div></div> <div> HAMILTON, Event Cinemas Chartwell </div> </div> |
| <div> <div></div> <div> Thursday 29 May 6:30pm, The Chodge </div> </div> | <div> <div></div> <div> Thursday 5 June SPECIAL EVENT: ADNZ Q&A ● THE CHODGE ● 6:15PM </div> </div> | <div> <div></div> <div> Thursday 12 June SPECIAL EVENT: ADNZ Q&A ● THE CHODGE ● 6:15PM </div> </div> |
| <div> <div></div> <div> Friday 30 May 6:30pm, Schindler Space Architect </div> </div> | <div> <div></div> <div> Friday 6 June 6:30pm, Schindler Space Architect </div> </div> | <div> <div></div> <div> Friday 13 June 6:30pm, Schindler Space Architect </div> </div> |
| <div> <div></div> <div> Saturday 31 May 4:15pm, Arthur Erickson 6pm, Eileen Gray 8:15pm, I am Martin Parr </div> </div> | <div> <div></div> <div> Saturday 7 June 4:15pm, Arthur Erickson 6pm, Eileen Gray 8:15pm, I am Martin Parr </div> </div> | <div> <div></div> <div> Saturday 14 June 4:15pm, Arthur Erickson 6pm, Eileen Gray 8:15pm, I am Martin Parr </div> </div> |
| <div> <div></div> <div> Sunday 1 June 4:15pm, Eileen Gray* 6pm, Sense of Tuning </div> </div> | <div> <div></div> <div> Sunday 8 June 2:30pm, Mary Heilmann 4:15pm, Eileen Gray* 6pm, Sense of Tuning </div> </div> | <div> <div></div> <div> Sunday 15 June 2:30pm, Mary Heilmann 4:15pm, Eileen Gray* 6pm, Sense of Tuning </div> </div> |
| <div> <div></div> <div> Monday 2 June 4pm, Mary Heilmann 5:45pm, Sitting Still </div> </div> | <div> <div></div> <div> Monday 9 June 5:45pm, Sitting Still </div> </div> | <div> <div></div> <div> Monday 16 June 5:45pm, Sitting Still </div> </div> |
| <div> <div></div> <div> Tuesday 3 June 6pm, Dale Frank </div> </div> | <div> <div></div> <div> Tuesday 10 June 6pm, Dale Frank </div> </div> | <div> <div></div> <div> Tuesday 17 June 6pm, Dale Frank </div> </div> |
| <div> <div></div> <div> Wednesday 4 June 6pm, Architecton </div> </div> | <div> <div></div> <div> Wednesday 11 June 6pm, Architecton </div> </div> | <div> <div></div> <div> Wednesday 18 June 6pm, Architecton </div> </div> |
| <div> <div></div> <div> WHANGĀREI, Event Cinemas </div> </div> | <div> <div></div> <div> PALMERSTON NORTH, Event Cinemas </div> </div> | <div> <div></div> <div> TAURANGA, Event Cinemas Tauranga Central </div> </div> |
| <div> <div></div> <div> Thursday 29 May 6:30pm, The Chodge </div> </div> | <div> <div></div> <div> Thursday 5 June SPECIAL EVENT: ADNZ Q&A ● THE CHODGE ● 6:15PM </div> </div> | <div> <div></div> <div> Thursday 19 June SPECIAL EVENT: ADNZ Q&A ● THE CHODGE ● 6:15PM </div> </div> |
| <div> <div></div> <div> Friday 30 May 6:30pm, Schindler Space Architect </div> </div> | <div> <div></div> <div> Friday 6 June 6:30pm, Schindler Space Architect </div> </div> | <div> <div></div> <div> Friday 20 June 6:30pm, Schindler Space Architect </div> </div> |
| <div> <div></div> <div> Saturday 31 May 4:15pm, Arthur Erickson 6pm, Eileen Gray 8:15pm, I am Martin Parr </div> </div> | <div> <div></div> <div> Saturday 7 June 4:15pm, Arthur Erickson 6pm, Eileen Gray 8:15pm, I am Martin Parr </div> </div> | <div> <div></div> <div> Saturday 21 June 4:15pm, Arthur Erickson 6pm, Eileen Gray 8:15pm, I am Martin Parr </div> </div> |
| <div> <div></div> <div> Sunday 1 June 4:15pm, Eileen Gray* 6pm, Sense of Tuning </div> </div> | <div> <div></div> <div> Sunday 8 June 2:30pm, Mary Heilmann 4:15pm, Eileen Gray* 6pm, Sense of Tuning </div> </div> | <div> <div></div> <div> Sunday 22 June 2:30pm, Mary Heilmann 4:15pm, Eileen Gray* 6pm, Sense of Tuning </div> </div> |
| <div> <div></div> <div> Monday 2 June 6pm, Dale Frank </div> </div> | <div> <div></div> <div> Monday 9 June 5:45pm, Sitting Still </div> </div> | <div> <div></div> <div> Monday 23 June 5:45pm, Sitting Still </div> </div> |
| <div> <div></div> <div> Wednesday 4 June 6pm, Architecton </div> </div> | <div> <div></div> <div> Tuesday 10 June 6pm, Dale Frank </div> </div> | <div> <div></div> <div> Tuesday 24 June 6pm, Dale Frank </div> </div> |
| | <div> <div></div> <div> Wednesday 11 June 6pm, Architecton </div> </div> | <div> <div></div> <div> Wednesday 25 June 6pm, Architecton </div> </div> |

SCHEDULE BY FILM

| ARCHITECTON | ARTHUR ERICKSON: BEAUTY BETWEEN THE LINES | |
|--|--|--|
| <p>📍 Auckland Mon 5 May, 12:15pm Wed 7 May, 8:30pm Fri 9 May, 11am Tue 13 May, 6:15pm Thu 15 May, 2:15pm Tue 20 May, 8pm</p> <p>📍 Nelson Sat 10 May, 8:15pm Sat 17 May, 2:30pm</p> <p>📍 Wellington, Embassy Theatre Mon 19 May, 6pm Sat 24 May, 4:30pm</p> <p>📍 Wellington, Light House Cinema Cuba Wed 21 May, 8pm Tue 27 May, 11am</p> <p>📍 Wellington, Light House Cinema Petone Fri 16 May, 6pm</p> <p>📍 Christchurch Sun 18 May, 7:45pm Tue 20 May, 12:15pm Mon 26 May, 6pm</p> <p>📍 Dunedin Sun 1 June, 8pm Sat 7 June, 2:30pm Tue 10 June, 7:45pm</p> <p>📍 Hawke's Bay Sun 1 June, 7:45pm Sat 7 June, 11:30am Mon 9 June, 3:30pm</p> <p>📍 Blenheim Wed 4 June, 6pm</p> <p>📍 Whangārei Wed 4 June, 6pm</p> <p>📍 New Plymouth Wed 11 June, 6pm</p> <p>📍 Palmerston North Wed 11 June, 6pm</p> <p>📍 Hamilton Wed 18 June, 6pm</p> <p>📍 Tauranga Wed 25 June, 6pm</p> | <p>📍 Auckland Sat 3 May, 6:15pm Wed 7 May, 10:45am Sun 11 May, 12:15pm Tue 13 May, 8:15pm Fri 16 May, 3pm Sat 17 May, 11:15am</p> <p>📍 Nelson Sun 11 May, 1:30pm Tue 13 May, 6pm</p> <p>📍 Wellington, Embassy Theatre Sat 17 May, 2:30pm Tue 20 May, 8:15pm Sat 24 May, 6:30pm</p> <p>📍 Wellington, Light House Cinema Cuba Thu 22 May, 8:40pm Sat 24 May, 1:45pm</p> <p>📍 Wellington, Light House Cinema Petone Wed 21 May, 11am Sun 1 June, 6pm</p> <p>📍 Christchurch Sat 17 May, 2:30pm Fri 23 May, 6:30pm Mon 26 May, 10am</p> <p>📍 Dunedin Sat 31 May, 2:45pm Thu 5 June, 6pm Mon 9 June, 11:30am</p> <p>📍 Hawke's Bay Sat 31 May, 2pm Tue 3 June, 5:45pm Tue 10 June, 3:45pm</p> <p>📍 Blenheim Sat 31 May, 4:15pm</p> <p>📍 Whangārei Sat 31 May, 4:15pm</p> <p>📍 New Plymouth Sat 7 June, 4:15pm</p> <p>📍 Palmerston North Sat 7 June, 4:15pm</p> <p>📍 Hamilton Sat 14 June, 4:15pm</p> | <p>📍 Tauranga Sat 21 June, 4:15pm</p> <p>THE CHODGE</p> <p>📍 Auckland SPECIAL EVENT: OPENING NIGHT THU 1 MAY, 5:45PM FOR 6:30PM SCREENING SPECIAL EVENT: ADNZ Q&A SUN 4 MAY, 3:45PM SPECIAL EVENT: ADNZ Q&A MON 5 MAY, 6PM Sat 10 May, 6:45pm Mon 12 May, 7:30pm Wed 14 May, 10:45am Thu 15 May, 8:40pm Sat 17 May, 2:45pm Sun 18 May, 12:45pm</p> <p>📍 Nelson SPECIAL EVENT: ADNZ Q&A THU 8 MAY, 6:15PM Sun 11 May, 4:55pm Fri 16 May, 7:10pm Sun 18 May, 1:30pm</p> <p>📍 Wellington, Embassy Theatre Thu 15 May, 6:30pm Sat 17 May, 11:30am Sun 18 May, 4:30pm SPECIAL EVENT: ADNZ Q&A MON 26 MAY, 6:15PM</p> <p>📍 Wellington, Light House Cinema Cuba Sat 17 May, 8:15pm Fri 23 May, 6:30pm Sat 24 May, 3:30pm</p> <p>📍 Wellington, Light House Cinema Petone Sun 18 May, 4:30pm Tue 27 May, 6pm</p> <p>📍 Wellington, Te Papa SPECIAL EVENT: ADNZ Q&A SUN 25 MAY, 2PM</p> <p>📍 Christchurch Thu 15 May, 6:30pm Sat 17 May, 4:15pm</p> |

SCHEDULE BY FILM

| | | |
|---|---|---|
| <p>SPECIAL EVENT: ADNZ Q&A THU 22 MAY, 6PM Sun 25 May, 12:45pm</p> <p>SPECIAL EVENT: ADNZ Q&A THU 28 MAY, 6PM</p> <p>📍 Dunedin Thu 29 May, 6:30pm Sat 31 May, 4:30pm Sun 1 June, 11:15am SPECIAL EVENT: ADNZ Q&A TUE 3 JUNE, 6PM Fri 6 June, 5:15pm Sun 8 June, 12:15pm</p> <p>📍 Hawke's Bay SPECIAL EVENT: ADNZ Q&A THU 29 MAY, 7PM Sat 31 May, 4pm Fri 6 June, 6:15pm Sun 8 June, 12pm</p> <p>📍 Blenheim Thu 29 May, 6:30pm</p> <p>📍 Whangārei Thu 29 May, 6:30pm</p> <p>📍 New Plymouth SPECIAL EVENT: ADNZ Q&A THU 5 JUNE, 6:15PM</p> <p>📍 Palmerston North SPECIAL EVENT: ADNZ Q&A THU 5 JUNE, 6:15PM</p> <p>📍 Hamilton SPECIAL EVENT: ADNZ Q&A THU 12 JUNE, 6:15PM</p> <p>📍 Tauranga SPECIAL EVENT: ADNZ Q&A THU 19 JUNE, 6:15PM</p> | <p>📍 Wellington, Embassy Theatre Sat 17 May, 8:30pm Sat 24 May, 12:45pm</p> <p>📍 Wellington, Light House Cinema Cuba Thu 15 May, 7:45pm Wed 21 May, 11am</p> <p>📍 Wellington, Light House Cinema Petone Sun 18 May, 6pm</p> <p>📍 Wellington, Te Papa Sun 25 May, 11am</p> <p>📍 Christchurch Mon 19 May, 12pm Sat 24 May, 8:15pm Tue 27 May, 10am</p> <p>📍 Dunedin Mon 2 June, 2pm Sat 7 June, 8:15pm Tue 10 June, 11am</p> <p>📍 Hawke's Bay Mon 2 June, 1:30pm Sun 8 June, 7:15pm Wed 11 June, 3:30pm</p> <p>📍 Whangārei Tue 3 June, 6pm</p> <p>📍 New Plymouth Tue 10 June, 6pm</p> <p>📍 Palmerston North Tue 10 June, 6pm</p> <p>📍 Hamilton Tue 17 June, 6pm</p> <p>📍 Tauranga Tue 24 June, 6pm</p> <p>📍 Blenheim Tue 3 June, 6pm</p> | <p>📍 Nelson Thu 8 May, 8:15pm Mon 19 May, 6:15pm</p> <p>📍 Wellington, Embassy Theatre Thu 15 May, 8pm Sun 25 May, 6:15pm</p> <p>📍 Wellington, Light House Cinema Cuba Mon 19 May, 7:30pm Tue 27 May, 7:45pm</p> <p>📍 Wellington, Light House Cinema Petone Wed 21 May, 6pm</p> <p>📍 Christchurch Thu 15 May, 8pm Thu 22 May, 8pm Tue 27 May, 12:15pm</p> <p>📍 Dunedin Thu 29 May, 8pm Sun 8 June, 10:45am Tue 10 June, 6:15pm</p> <p>📍 Hawke's Bay Wed 4 June, 4:15pm Mon 9 June, 5:45pm</p> |
| E.1027–EILEEN GRAY AND THE HOUSE BY THE SEA preceded by HER BLUEPRINT, AOTEAROA | | |
| * no screening of Her Blueprint, Aotearoa in this session | | |
| Auckland | | |
| SPECIAL EVENT: PREMIERE NIGHT WED 7 MAY, 6PM FOR 6:15PM SCREENING Fri 9 May, 1pm* Fri 9 May, 6:35pm Sun 11 May, 10am | | |
| SPECIAL EVENT: MOTHER'S DAY SPECIAL EVENT SUN 11 MAY, 2PM ARRIVAL FOR 2:15PM SCREENING* Wed 14 May, 12:15pm | | |
| SPECIAL EVENT: A+W & NAWIC Q&A THU 15 MAY, 6PM Fri 16 May, 8:40pm Sat 17 May, 4:15pm | | |
| THE DOCUMERICA PROJECT preceded by TĀWHARAU LANE: A SUSTAINABILITY EXEMPLAR | | |
| <p>📍 Auckland Fri 2 May, 8:40pm Sun 4 May, 11:45am Tue 6 May, 6pm Sat 10 May, 4:30pm Tue 13 May, 10:45am Sun 18 May, 7:30pm</p> <p>📍 Nelson Sat 10 May, 12:15pm Sun 18 May, 8:05pm</p> | <p>📍 Auckland Thu 1 May, 8:15pm Mon 5 May, 2:15pm Thu 8 May, 12:45pm Sun 18 May, 2:15pm Tue 20 May, 11am</p> | |

SCHEDULE BY FILM

Sun 18 May, 5:30pm*
Mon 19 May, 7:30pm
Wed 21 May, 12:15pm

📍 **Nelson**
Fri 9 May, 6:45pm*
Sat 10 May, 6pm
Fri 16 May, 8:30pm
Sat 17 May, 10:45am*
Sun 18 May, 2:50pm

📍 **Wellington, Embassy Theatre**
Sat 17 May, 4:30pm*
Sat 17 May, 6:15pm
Wed 21 May, 6:30pm*
Wed 21 May, 8:15pm
Sun 25 May, 4pm

📍 **Wellington, Light House Cinema Cuba**
Fri 16 May, 8:15pm
Sun 18 May, 2pm
SPECIAL EVENT:
A+W & NAWIC Q&A
THU 22 MAY, 6PM
Mon 26 May, 11am*

📍 **Wellington, Light House Cinema Petone**
Sat 17 May, 6pm*
Fri 23 May, 6pm
Mon 2 June, 3:30pm

📍 **Wellington, Te Papa**
Sat 24 May, 2pm

📍 **Christchurch**
Sat 17 May, 5:45pm
Sun 18 May, 12:45pm*
Tue 20 May, 10am
Thu 22 May, 10am*
Sun 25 May, 2:15pm
Sun 25 May, 6pm*
SPECIAL EVENT:
A+W & NAWIC Q&A
WED 28 MAY, 5:45PM

📍 **Dunedin**
Fri 30 May, 11am
Fri 30 May, 6:15pm*
Sat 31 May, 6pm
Tue 3 June, 8pm*
Fri 6 June, 8:15pm
Sat 7 June, 11am*
Sun 8 June, 1:45pm

📍 **Hawke's Bay**
Sat 31 May, 5:30pm
Mon 2 June, 11:15am
Fri 6 June, 7:45pm
Sun 8 June, 1:30pm

📍 **Blenheim**
Sat 31 May, 6pm
Sun 1 June, 4:15pm*

📍 **Whangārei**
Sat 31 May, 6pm
Sun 1 June, 4:15pm*

📍 **New Plymouth**
Sat 7 June, 6pm
Sun 8 June, 4:15pm*

📍 **Palmerston North**
Sat 7 June, 6pm
Sun 8 June, 4:15pm*

📍 **Hamilton**
Sat 14 June, 6pm
Sun 15 June, 4:15pm*

📍 **Tauranga**
Sat 21 June, 6pm
Sun 22 June, 4:15pm*

EVER THE LAND

📍 **Auckland**
Fri 2 May, 6:45pm

📍 **Nelson**
Tue 20 May, 7:45pm

📍 **Wellington, Embassy Theatre**
Fri 16 May, 8:30pm

📍 **Wellington, Light House Cinema Cuba**
Sun 25 May, 5:45pm

📍 **Wellington, Light House Cinema Petone**
Mon 19 May, 6pm

📍 **Christchurch**
Wed 28 May, 8pm

📍 **Dunedin**
Wed 11 June, 8pm

📍 **Hawke's Bay**
Thu 5 June, 7:45pm

THE HOUSE: 6 POINTS OF DEPARTURE screening w THIS IS NOT A HOUSE

📍 **Auckland**
Sat 3 May, 11am
Tue 6 May, 12:30pm
Thu 8 May, 8:15pm
Mon 12 May, 2:15pm
Sat 17 May, 6:30pm

📍 **Nelson**
Sun 11 May, 6:15pm
Tue 20 May, 6pm

📍 **Wellington, Embassy Theatre**
Sat 17 May, 12:45pm
Sat 24 May, 8:15pm

📍 **Wellington, Light House Cinema Cuba**
Sun 25 May, 4pm
Tue 27 May, 6pm

📍 **Wellington, Light House Cinema Petone**
Fri 30 May, 6:15pm

📍 **Christchurch**
Sun 18 May, 6pm
Wed 21 May, 10am
Sat 24 May, 4:45pm

📍 **Dunedin**
Sun 1 June, 6:15pm
Sat 7 June, 12:45pm
Mon 9 June, 5:45pm

📍 **Hawke's Bay**
Sun 1 June, 5:45pm
Fri 6 June, 4:30pm
Tue 10 June, 5:45pm

I AM MARTIN PARR

📍 **Auckland**
Fri 2 May, 5:15pm
Wed 7 May, 2:30pm
Sat 10 May, 11am
Mon 12 May, 6pm
Thu 15 May, 11am
Wed 21 May, 10:45am

📍 **Nelson**
Fri 9 May, 5:10pm
Sun 11 May, 8pm
Sun 18 May, 12pm

SCHEDULE BY FILM

📍 **Wellington, Embassy Theatre**
Fri 16 May, 7pm
Sat 24 May, 3pm

📍 **Wellington, Light House Cinema Cuba**
Sun 18 May, 5:45pm
Wed 28 May, 11am

📍 **Wellington, Light House Cinema Petone**
Thu 15 May, 6pm
Sun 25 May, 4:30pm

📍 **Wellington, Te Papa**
Sat 24 May, 11am

📍 **Christchurch**
Sat 17 May, 8pm
Thu 22 May, 11:45am
Sat 24 May, 3:15pm

📍 **Dunedin**
Sat 31 May, 8:15pm
Fri 6 June, 11am
Sun 8 June, 4pm

📍 **Hawke's Bay**
Sat 31 May, 7:45pm
Tue 3 June, 2:15pm
Sun 8 June, 3:45pm

📍 **Blenheim**
Sat 31 May, 8:15pm

📍 **Whangārei**
Sat 31 May, 8:15pm

📍 **New Plymouth**
Sat 7 June, 8:15pm

📍 **Palmerston North**
Sat 7 June, 8:15pm

📍 **Hamilton**
Sat 14 June, 8:15pm

📍 **Tauranga**
Sat 21 June, 8:15pm

JACQUEMUS: THE PRINCE OF TODAY'S FASHION preceded by RICHARD SERRA: YOU ARE THE SUBJECT

📍 **Auckland**
Thu 8 May, 2:15pm
Mon 12 May, 12:30pm
Fri 16 May, 5:15pm

Sat 17 May, 1pm
Sun 18 May, 3:45pm
Wed 21 May, 6:30pm

📍 **Nelson**
Sat 10 May, 2:30pm
Thu 15 May, 8pm

📍 **Wellington, Embassy Theatre**
Fri 21 May, 3:30pm
Mon 26 May, 8:15pm

📍 **Wellington, Light House Cinema Cuba**
Mon 19 May, 5:45pm
Thu 22 May, 1:30pm

📍 **Wellington, Light House Cinema Petone**
Wed 28 May, 6:30pm

📍 **Christchurch**
Mon 19 May, 8pm
Wed 21 May, 11:45am
Tue 27 May, 8pm

📍 **Dunedin**
Fri 30 May, 1:15pm
Mon 2 June, 10:45am
Wed 4 June, 7:45pm

📍 **Hawke's Bay**
Tue 3 June, 4pm
Wed 11 June, 7:45pm

LEWERENTZ DIVINE DARKNESS

📍 **Auckland**
Sun 4 May, 5:45pm
Tue 6 May, 2:15pm
Sun 11 May, 4:15pm
Fri 16 May, 10:45am
Mon 19 May, 6pm

📍 **Nelson**
Sat 10 May, 10:30am
Fri 16 May, 5:30pm
Sun 18 May, 6:30pm

📍 **Wellington, Embassy Theatre**
Sun 18 May, 12:45pm
Wed 28 May, 6:15pm

📍 **Wellington, Light House Cinema Cuba**
Tue 20 May, 11am
Friday 23 May, 8pm
Mon 26 May, 5:45pm

📍 **Wellington, Light House Cinema Petone**
Thu 22 May, 6:30pm
Wed 28 May, 11am

📍 **Christchurch**
Sat 17 May, 12:45pm
Tue 20 May, 6:15pm
Mon 26 May, 11:45am

📍 **Dunedin**
Sat 31 May, 1pm
Mon 2 June, 6pm
Thu 5 June, 11am

📍 **Hawke's Bay**
Sat 31 May, 12:15pm
Mon 2 June, 5:30pm
Thu 5 June, 1:45pm

MARY HEILMANN: WAVES, ROADS & HALLUCINATIONS

📍 **Auckland**
Sat 3 May, 12:45pm
Tue 6 May, 10:45am

SPECIAL EVENT: ART LOVERS' FILM NIGHT THU 8 MAY, 6PM FOR 6:15PM SCREENING

Sat 10 May, 8:15pm
Thu 15 May, 12:30pm

📍 **Nelson**
Fri 9 May, 8:30pm
Sun 11 May, 3:15pm
Sat 17 May, 6:30pm

📍 **Wellington, Embassy Theatre**
Mon 19 May, 8pm
Fri 23 May, 5:15pm
Sun 25 May, 12:30pm

📍 **Wellington, Light House Cinema Cuba**
Sat 17 May, 2:15pm
Wed 21 May, 6:15pm

📍 **Wellington, Light House Cinema Petone**
Fri 16 May, 11am
Sat 24 May, 6pm

📍 **Christchurch**
Sun 18 May, 2:30pm
Tue 20 May, 8pm
Sat 24 May, 6:30pm
Wed 28 May, 10am

SCHEDULE BY FILM

📍 **Dunedin**
Sun 1 June, 2:45pm
Sat 7 June, 6:30pm
Wed 11 June, 11am

📍 **Hawke’s Bay**
Fri 30 May, 7:45pm
Sun 1 June, 2:15pm
Sat 7 June, 6pm
Wed 11 June, 1:45pm

📍 **Blenheim**
Mon 2 June, 4pm

📍 **Whangārei**
Mon 2 June, 4pm

📍 **New Plymouth**
Sun 8 June, 2:30pm

📍 **Palmerston North**
Sun 8 June, 2:30pm

📍 **Hamilton**
Sun 15 June, 2:30pm

📍 **Tauranga**
Sun 22 June, 2:30pm

SCHINDLER SPACE
ARCHITECT

📍 **Auckland**
Fri 2 May, 11:15am
Sat 3 May, 8:15pm
Tue 6 May, 8:15pm
Wed 7 May, 12:30pm
Sat 10 May, 2:30pm
Mon 12 May, 10:30am
Wed 14 May, 8pm
Sat 17 May, 8:15pm
Mon 19 May, 12:15pm

📍 **Nelson**
Tue 13 May, 7:45pm
Sat 17 May, 4:30pm
Mon 19 May, 7:45pm

📍 **Wellington, Embassy Theatre**
Sun 18 May, 7:45pm
Tue 20 May, 6:15pm
Sat 24 May, 10:45am

📍 **Wellington, Light House Cinema Cuba**
Fri 23 May, 1:30pm
Wed 28 May, 8:15pm

📍 **Wellington, Light House Cinema Petone**
Thu 22 May, 11am
Mon 26 May, 6pm

📍 **Christchurch**
Fri 16 May, 8pm
Mon 19 May, 10am
Sat 24 May, 1:15pm

📍 **Dunedin**
Fri 30 May, 8pm
Mon 2 June, 7:45pm
Sat 7 June, 4:30pm

📍 **Hawke’s Bay**
Tue 3 June, 7:45pm
Sat 7 June, 3:45pm
Tue 10 June, 1:30pm

📍 **Blenheim**
Fri 30 May, 6:30pm

📍 **Whangārei**
Fri 30 May, 6:30pm

📍 **New Plymouth**
Fri 6 June, 6:30pm

📍 **Palmerston North**
Fri 6 June, 6:30pm

📍 **Hamilton**
Fri 13 June, 6:30pm

📍 **Tauranga**
Fri 20 June, 6:30pm

THE SENSE OF TUNING

📍 **Auckland**
Fri 2 May, 3pm
Sun 4 May, 7:30pm
Sat 10 May, 12:30pm
Wed 14 May, 6pm
Sun 18 May, 10:30am
Tue 20 May, 12:30pm
Wed 21 May, 8:15pm

📍 **Nelson**
Mon 12 May, 7:45pm
Thu 15 May, 6pm
Sat 17 May, 12:30pm

📍 **Wellington, Embassy Theatre**
Sun 18 May, 2:30pm
Fri 23 May, 8:30pm
Tue 27 May, 6:15pm

📍 **Wellington, Light House Cinema**
Fri 16 May, 1:30pm
Sat 24 May, 8pm

📍 **Wellington, Light House Cinema Petone**
Sun 25 May, 6pm

📍 **Christchurch**
Mon 19 May, 6pm
Fri 23 May, 11:45am
Sun 25 May, 7:45pm

📍 **Dunedin**
Sun 1 June, 12:45pm
Thu 5 June, 7:45pm
Wed 11 June, 6pm

📍 **Hawke’s Bay**
Mon 2 June, 7:15pm
Thu 5 June, 5:30pm
Sat 7 June, 1:30pm

📍 **Blenheim**
Sun 1 June, 6pm

📍 **Whangārei**
Sun 1 June, 6pm

📍 **New Plymouth**
Sun 8 June, 6pm

📍 **Palmerston North**
Sun 8 June, 6pm

📍 **Hamilton**
Sun 15 June, 6pm

📍 **Tauranga**
Sun 22 June, 6pm

SITTING STILL

📍 **Auckland**
Sat 3 May, 4:15pm
Fri 9 May, 3pm
Fri 16 May, 12:30 pm
Sun 11 May, 7:30pm
Mon 19 May, 10:15am

📍 **Nelson**
Wed 14 May, 7:45pm
Wed 21 May, 7:45pm

📍 **Wellington, Embassy Theatre**
Fri 23 May, 3:30pm
Wed 28 May, 8pm

📍 **Wellington, Light House Cinema Cuba**
Mon 19 May, 11am
Mon 26 May, 7:30pm

SCHEDULE BY FILM

📍 **Wellington, Light House Cinema Petone**
Tue 20 May, 6:30pm

📍 **Christchurch**
Wed 21 May, 8pm
Mon 26 May, 8pm
Wed 28 May, 11:45am

📍 **Dunedin**
Tue 3 June, 11am
Fri 6 June, 12:30pm
Mon 9 June, 7:30pm

📍 **Hawke’s Bay**
Fri 30 May, 2:30pm
Thu 5 June, 3:30pm
Tue 10 June, 7:45pm

📍 **Blenheim**
Mon 2 June, 5:45pm

📍 **Whangārei**
Mon 2 June, 5:45pm

📍 **New Plymouth**
Mon 9 June, 5:45pm

📍 **Palmerston North**
Mon 9 June, 5:45pm

📍 **Hamilton**
Mon 16 June, 5:45pm

📍 **Tauranga**
Mon 23 June, 5:45pm

VIVA NIKI—THE
SPIRIT OF NIKI
DE SAINT PHALLE

📍 **Auckland**
Sat 3 May, 2:30pm
Mon 5 May, 10:30am
Fri 9 May, 8:40pm
Tue 13 May, 2:30pm
Fri 16 May, 7pm

📍 **Nelson**
Sat 10 May, 4:15pm
Sat 17 May, 8:15pm
Wed 21 May, 6pm

📍 **Wellington, Embassy Theatre**
Sun 18 May, 6pm
Sun 25 May, 2:15pm
Tue 27 May, 8:15pm

📍 **Wellington, Light House Cinema Cuba**
Sat 17 May, 4pm
Wed 28 May, 6:30pm

📍 **Wellington, Light House Cinema Petone**
Fri 23 May, 11am
Sat 31 May, 6:15pm

📍 **Christchurch**
Fri 16 May, 6:15pm
Sun 18 May, 4:15pm
Fri 23 May, 10am

📍 **Dunedin**
Sun 1 June, 4:30pm
Wed 4 June, 11am
Fri 6 June, 6:30pm

📍 **Hawke’s Bay**
Sun 1 June, 4pm
Wed 4 June, 2:15pm
Sat 7 June, 7:45pm
Wed 11 June, 5:45pm

WE THE OTHERS
preceded by FRUITVALE:
A COMMUNITY COMPASS
FOR REGENERATION

📍 **Auckland**
Fri 2 May, 1:15pm
Sun 4 May, 10:15am
Fri 9 May, 5:05pm
Sun 11 May, 6pm
Wed 14 May, 2:30pm

📍 **Nelson**
Mon 12 May, 6pm
Sun 18 May, 5pm

📍 **Wellington, Embassy Theatre**
Fri 23 May, 7pm
Sun 25 May, 11am

📍 **Wellington, Light House Cinema Cuba**
Sun 18 May, 4:15pm
Tue 20 May, 6:30pm

📍 **Wellington, Light House Cinema Petone**
Sat 17 May, 4:30pm

📍 **Christchurch**
Fri 16 May, 10am
Fri 23 May, 8:15pm
Sun 25 May, 4:30pm

📍 **Dunedin**
Sat 31 May, 11:30am
Mon 2 June, 4:15pm
Sun 8 June, 5:45pm

📍 **Hawke’s Bay**
Mon 2 June, 3:45pm
Fri 6 June, 2:45pm
Sun 8 June, 5:30pm

WORLDS OF
URSULA K. LE GUIN

📍 **Auckland**
Sun 4 May, 2pm
Mon 5 May, 8pm
Thu 8 May, 11am
Tue 13 May, 1pm
Tue 20 May, 6:30pm

📍 **Nelson**
Sun 11 May, 12pm
Wed 14 May, 6pm

📍 **Wellington, Embassy Theatre**
Fri 16 May, 5:30pm
Sun 18 May, 11:15am
Sun 25 May, 7:45pm

📍 **Wellington, Light House Cinema Cuba**
Thu 15 May, 6:15pm
Fri 16 May, 6:30pm
Tue 20 May, 8pm
Sun 25 May, 2:30pm

📍 **Wellington, Light House Cinema Petone**
Sat 24 May, 4:30pm
Thu 29 May, 6pm

📍 **Christchurch**
Fri 16 May, 11:30am
Wed 21 May, 6:30pm
Sat 24 May, 11:45am

📍 **Dunedin**
Mon 2 June, 12:30pm
Wed 4 June, 6:15pm
Sun 8 June, 7:30pm

📍 **Hawke’s Bay**
Fri 30 May, 4:30pm
Wed 4 June, 6pm
Mon 9 June, 7:30pm

Resene

**ARCHITECTURE
& DESIGN
FILM FESTIVAL
2025**



**Proud supporters of
architecture and design
in New Zealand since 1946.**

Resene
the paint the professionals use